

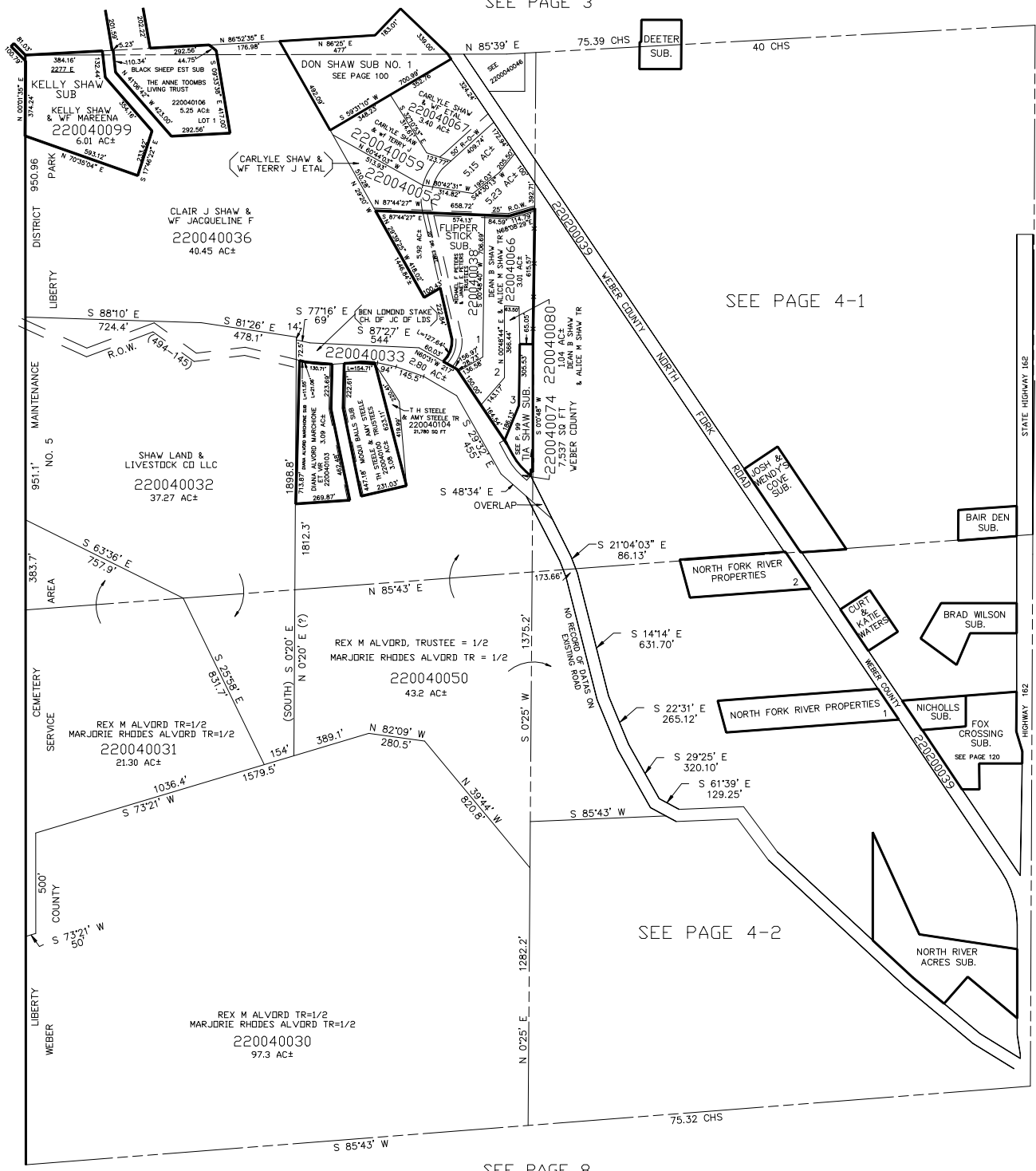
SECTION 7, T.7N., R.1E., S.L.B. & M.

LIBERTY DISTRICT

SCALE 1" = 400'

TAXING UNIT: 36

SEE PAGE 3



SEE PAGE 4-1

SEE PAGE 4-2

SEE PAGE 8

SEE BOOK 16  
PAGE 5

SEE PAGE 5